



Shakespeare Road, Poets Corner, Mill Hill

£725,000

Cosway Estates proudly presents this charming and versatile family home, ideally situated in the highly sought-after Poets Corner neighbourhood.

The ground floor features a spacious living room, perfect for relaxing or entertaining, along with a well-appointed kitchen designed to accommodate family life and social gatherings. Upstairs, you'll find two comfortable bedrooms and a modern family bathroom, offering a peaceful retreat from the main living areas. Enhancing the home's flexibility, a generous outhouse with a convenient WC provides additional space ideal for a home office, gym, or guest suite.

Planning permission has already been granted for both a double-storey rear extension and a loft conversion, allowing the next owner to expand and tailor the property to their needs.

Located close to well-regarded schools including Goldwyn's and Etz Chaim, and just moments from the vibrant shops, cafes, and transport links of Mill Hill Broadway, this is a rare opportunity to secure a home with both immediate charm and outstanding future potential in one of the area's most desirable locations. Sole Agent.

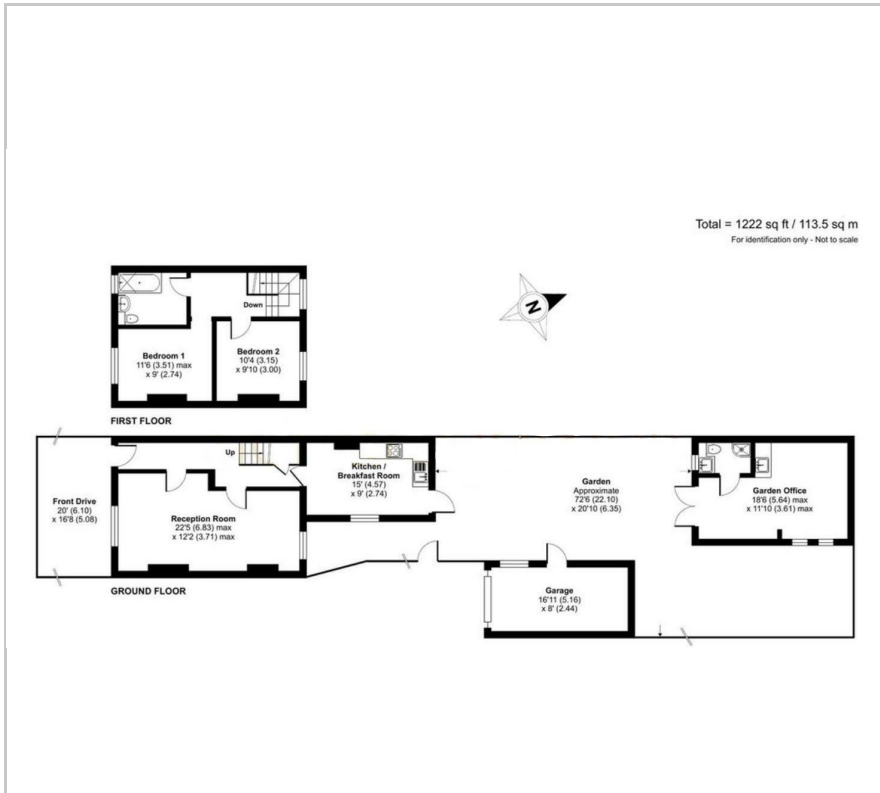
- POETS CORNER
- 2 DOUBLE BEDROOM
- PLANNING PERMISSION APPROVED
- THROUGH LOUNGE
- OFF-STREET PARKING
- CLOSE TO EXCELLENT LOCAL SCHOOLS
- MODERN KITCHEN
- SPACIOUS OUTHOUSE
- SOLE AGENT

Viewing

Please contact our Mill Hill Office on 02089590011 if you wish to arrange a viewing appointment for this property or require further information.



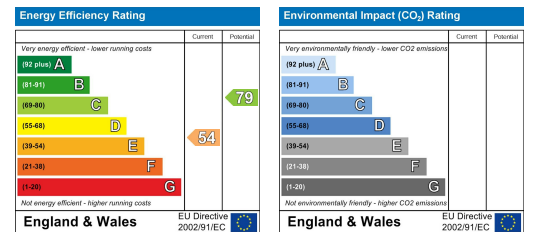
Floor Plan



Area Map



Energy Efficiency Graph



These particulars, whilst believed to be accurate are set out as a general outline only for guidance and do not constitute any part of an offer or contract. Intending purchasers should not rely on them as statements of representation of fact, but must satisfy themselves by inspection or otherwise as to their accuracy. No person in this firm's employment has the authority to make or give any representation or warranty in respect of the property.